



# RACING DRIVERS CLUB NEWSLETTER 2006



## THE CHAMPIONSHIP

This racing series has been specifically set-up to cater for the BMW driver who wants to push themselves further.

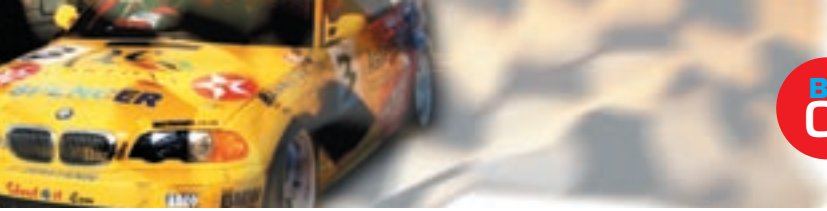
5 class categories ensure that you and Your machine are evenly matched so that racing is as close as it can be.

The emphasis is on **Challenge**.



- Competition between drivers rather than engines
- Ability to run a BMW of any vintage
- A range of BMW's from current Z3's, M3's to 2002's from the 70's
- Class structure which enables drivers to compete at any level
- Well policed, hassle free & managed by the BMWRDC
- New invitation class for MINI COOPERS - DTM & Britcar spec
- Consistently growing - Full grids!
- Only BMW championship operating anywhere in the world BARC regulated





## BMW RACING DRIVERS CLUB CLASSES

### CLASSES

**A** 220 BHP PER TONNE

**B** 195 BHP PER TONNE

**C** 175 BHP PER TONNE

**D** INVITATION CLASS

Any BMW vehicle including MINI, DTM, BRITCAR. Non Points Scoring

**E** 165 BHP PER TONNE  
E30,2002,318i,320i

Please refer to full regulations for technical information

### POINTS FOR FINISHING

**1st** 10 POINTS (MAX)

**2nd** 9 POINTS

**3rd** 8 POINTS

**4th** 7 POINTS

**5th** 6 POINTS

- ALL OTHER FINISHERS 5 POINTS
- NON-FINISHERS 1 POINT
- POINTS SCORED ON ALL ROUNDS
- 1 POINT FASTEST LAP EACH CLASS



## BMW RACING DRIVERS CLUB DRIVERS PROFILE

### CLASS A

#### CAR NUMBER 2 BMW E36 M3

**RICHARD MALLINSON FROM THAME**

HAS BEEN RACING IN THE BMW SERIES FOR 5 YEARS. WAS CHAMPIONSHIP WINNER IN 2000. MOVED UP TO CLASS A THIS YEAR WITH A NEWLY BUILT CAR.

**LAST YEARS POSITION: CLASS B CHAMPION AND OVERALL 2ND IN CHAMPIONSHIP**

#### CAR NUMBER 5 BMW E36 M3

**IAN HILL FROM ORMSKIRK**

THIRD YEAR IN BMW CHAMPIONSHIP. PREVIOUSLY TRACK DAYS AND HE WAS A MOTOR CROSS RIDER.

**LAST YEARS POSITION: ENTERED ONE RACE**

#### CAR NUMBER 8 BMW E36 M3

**MIKAEL WALTERS FROM CAWOOD**

THIS IS MIKAEL'S SECOND SEASON RACING IN THE BMW RDC SERIES. A NEW BUILT CAR FOR THIS SEASON.

**LAST YEARS POSITION: 7TH IN CLASS**

#### CAR NUMBER 16 BMW E36 M3

**GARY FRYER FROM ST. ALBANS**

HAVING STARTED IN 1967 IN SPRINTS AND COMPETED IN VARIOUS CLUB RACING EVENTS SINCE THEN, GARY HAS PLENTY OF EXPERIENCE ON THE TRACK.

**LAST YEARS POSITION: NEW THIS SEASON**

#### CAR NUMBER 1 BMW E36 M3

**RICK KERRY FROM IPSWICH**

RICK JOINED THE BMW FOUR YEARS AGO, BUT PREVIOUSLY RACED SEVERAL OTHER CHAMPIONSHIPS INCLUDING STOCK CARS. HE RACED HIS NEWLY BUILT E36 TO 7 WINS LAST SEASON.

**LAST YEARS POSITION: 1ST IN CLASS A AND OVERALL CHAMPION 2005**

#### CAR NUMBER 3 BMW E36 M3

**PAUL WINTER FROM DORSET**

PAUL'S SECOND YEAR IN THE CHAMPIONSHIP. PREVIOUSLY 750 MOTOR CLUB STOCK HATCH.

**LAST YEAR POSITION: 3RD IN CLASS A**

#### CAR NUMBER 6 BMW E36 M3

**COLIN WHITMORE FROM LINCS.**

HAS BEEN RACING IN THE BMW SERIES FOR A COUPLE OF YEARS WITH INCREASING SUCCESS.

**LAST YEARS POSITION: 4TH IN CLASS A**

#### CAR NUMBER 9 BMW E36 M3

**IAN MUNNS FROM SURREY**

FIRST YEAR IN THE CHAMPIONSHIP

**LAST YEARS POSITION: NEW THIS SEASON**

#### CAR NUMBER 18 BMW E36 M3

**DAVID LAMYMAN FROM HERTFORDSHIRE**

DAVID IS SHARING HIS RIDE WITH GARY FRYER. THEY BOUGHT THE STANDARD CAR FROM EBAY AND HAVE SPENT THE LAST YEAR PREPARING IT FOR RACING.

**LAST YEARS POSITION: NEW THIS SEASON**



## CLASS B

### CAR NUMBER 24 BMW E30 M3

**MARK ASTLE FROM CHINLEY DERBYSHIRE**

THIS IS MARKS SECOND BMW SERIES AND COMPETES THIS YEAR WITH A CHANGE OF CAR.

**LAST YEARS POSITION: 4TH IN CLASS B**

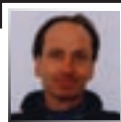


### CAR NUMBER 28 BMW E36 M3

**ADRIAN GILBERT FROM EALING**

1ST YEAR IN BMW SERIES AFTER A 25 YEAR BREAK FROM MOTOR SPORT. A NEWLY BUILT CAR FOR THIS YEAR.

**LAST YEARS POSITION: NEW THIS SEASON**



### CAR NUMBER 32 BMW E30 M3

**GARRIE WHITTAKER FROM NOTTINGHAM**

1ST BMW SEASON. COMPETED IN JIM RUSSELL RACING DRIVER SCHOOL IN 1997.

**LAST YEARS POSITION: NEW THIS SEASON**



### CAR NUMBER 34 BMW E30 M3

**JAMES COOK FROM NORWICH**

3RD YEAR IN BMW SERIES. CONSISTENT MID FIELD POINT SCORER IN CLASS.

**LAST YEARS POSITION: 5TH IN CLASS B**



### CAR NUMBER 42 BMW E30 325i

**IAN CRISP FROM DEVIZES**

2ND YEAR IN THE SERIES. PREVIOUSLY FORMULA FORD 1600CC AND 2000CC. MOVED UP TO CLASS B THIS SEASON

**LAST YEARS POSITION: 2ND IN CLASS C**



### CAR NUMBER 25 BMW E30 M3

**TREVOR FORD FROM ESHER**

HAS COMPETED IN BMW SERIES SINCE 1987. IS CLUB PRESIDENT AND RACES ON A FUN BASIS ONLY.

**LAST YEARS POSITION: NOT APPLICABLE**

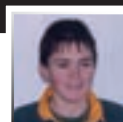


### CAR NUMBER 22 BMW E30 M3

**EVELYNE BUANIC FROM HUSBANDS BOSWORTH**

EVELYNE IS OUR ONLY LADY DRIVERS AND HAS BEEN RACING WITH THE BMW'S FOR OVER 10 YEARS AND CONSISTENTLY FINISHES IN THE TOP 3.

**LAST YEARS POSITION: 3RD IN CLASS B**



### CAR NUMBER 27 BMW M635i

**MARK McLENNAN FROM DORKING**

HAS PREVIOUSLY RACED A 2002 IN THE BMW CHAMPIONSHIP AND COMPETES IN THE CLASSIC SALOON SERIES.

**LAST YEARS POSITION: Did NOT COMPETE**



### CAR NUMBER 29 BMW E34 M5

**STEPHEN PEARSON FROM BURY St EDMUNDS**

1ST YEAR IN BMW SERIES RACING IN RICK KERRY'S EX M5

**LAST YEARS POSITION: NEW THIS SEASON**



### CAR NUMBER 33 BMW M6

**BRIAN JORDAN FROM SHEPTON MALLET**

SECOND YEAR IN BMW SERIES. PREVIOUSLY RACED IN SINGLE SEATER FORMULAS AND WAS AN INSTRUCTOR AT BRANDS HATCH

**LAST YEARS POSITION: 8TH IN CLASS B**



### CAR NUMBER 35 BMW E30 M3

**GIOVANNI DI GENNARO FROM LONDON**

GIOVANNI HAS BEEN RACING IN THE BMW SERIES FOR A FEW YEARS BUT RACED BEFORE IN AUTOITALIA SERIES IN A FIAT 125.

**LAST YEARS POSITION: 2ND IN CLASS B**



### CAR NUMBER 45 BMW E30 325i

**PAUL MOLONEY FROM STAFFORDSHIRE**

3RD YEAR IN BMW SERIES WITH A RE-BUILT CAR FOR THIS YEAR, RACED IN THE MID NINETIES BY CHRIS RANDLE.

**LAST YEARS POSITION: 8TH OVERALL AND CLASS D CHAMPION**



### CAR NUMBER 41 BMW E30 325i

**STUART LAWS FROM CROYDEN**

RACING IN BMW SERIES SINCE 1989, NEWLY BUILT CAR FOR THIS YEAR.

**LAST YEARS POSITION: 3RD IN CLASS C**



### CAR NUMBER 50 BMW E30 325i

**LEA SANDY FROM RIPLEY**

5TH YEAR IN BMW SERIES. CONSISTENT FRONT POINT SCORER IN CLASS D. MOVED UP TO CLASS C FOR THIS SEASON.

**LAST YEARS POSITION: 2ND IN CLASS D**



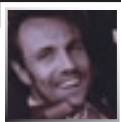
## CLASS C

### CAR NUMBER 44 BMW E30 325i

**JAMES PERROTT FROM BRISTOL**

2ND YEAR IN BMW SERIES. PREVIOUS EXPERIENCE IN KARTING. INVALUABLE COACHING FROM MATT SELDON.

**LAST YEARS POSITION: 5TH OVERALL IN CHAMPIONSHIP AND CLASS C CHAMPION**



## BMW RACING DRIVERS CLUB SPONSORS

### BMW RACING DRIVERS CLUB

Would you like to sponsor a car?

#### BE A BMW RACING DRIVER!

Don't just watch your sponsorship on track, drive it!  
We are offering you the chance to drive in the BMW championship  
and compete with the professionals.

Step up from track days to a real, professionally run  
racing circuit experience for both men and women.

Contact us below for the chance to be P1.

Grid slots are available in this growing championship,  
so don't hesitate to call now and reserve  
the best BMW racing experience in the UK!

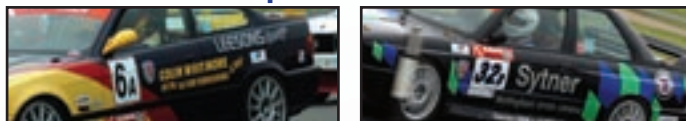
### WIN

2 Tyres at each round this season

Each driver in the BMW RDC championship will be entered  
into a raffle at each round and the winner goes home with a  
brand new pair of race tyres.

Sponsorship is a very important part of this racing series.  
We thank all of the sponsors for helping to keep this  
sport alive. If you would like to sponsor one of the teams  
or the entire BMW RDC then please contact us via  
the details below.

#### Be a part of the action.



DRIVER OF THE DAY AT EACH ROUND  
SPONSORED BY: MERLIN MOTORSPORT

Merlin in the paddock at Castle Combe  
Circuit. Showrooms open 6 days a week.  
[www.merlinmotorsport.co.uk](http://www.merlinmotorsport.co.uk)



## VENUE LINE-UP 2006

ROUND 1/2	SILVERSTONE	Sat 22nd April
ROUND 3	DONNINGTON PARK	Sun 7th May
ROUND 4	BRANDS HATCH	Sat 27th May
ROUND 5/6	SNETTERTON	Sun 25th June
ROUND 7/8	PEMBREY	Sat 29th / Sun 30th July
ROUND 9/10	MALLORY PARK	Sun 13th August
ROUND 11	THRUXTON	Mon 28th August
ROUND 12	OULTON PARK	Sat 30th Sep



**BMW CAR CLUB GB Ltd**  
[www.bmwcarclubgb.co.uk](http://www.bmwcarclubgb.co.uk)

Partners include **KUMHO TYRES** (Europe)



[www.kumho-europe.com](http://www.kumho-europe.com)



For further information on how to become a SPONSOR  
or a DRIVER in the BMW RACING DRIVERS CLUB  
please contact:

TREVOR FORD

27 Cranbrook Drive • Esher • Surrey • KT10 8DW  
email: [trevor@bmwrdc.com](mailto:trevor@bmwrdc.com)  
email: [nicki@nford27.fsnet.co.uk](mailto:nicki@nford27.fsnet.co.uk)

**Tel: 07710 49 39 53**

BARC championship Co-ordinator  
Nicola Bush - Tel: 01264 882209

PHOTOS BY:

DEREK BINSTED, EMAIL: [dj.bin3@ntlworld.com](mailto:dj.bin3@ntlworld.com)  
AND [WWW.FIERCE1.COM](http://WWW.FIERCE1.COM)

# KUMHO